

MALIBU DAYBED

OCEANWEAVE
premium outdoor furniture



email: sales@oceanweavefurniture.co.nz www.oceanweavefurniture.co.nz



Daybed - 10368
W190 x D200 x H90cm

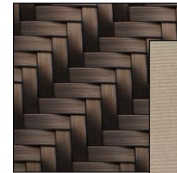
Colour Options



Whitewash



Coal



Bronze



Taupe



German Rehau fibre

Hand-woven using "RAUCORD" weaving material from German company REHAU. RAUCORD is stress tested in temperatures from -10oC up to 50oC without any changes to the weaving, and is maintenance free, durable, UV resistant and weatherproof.



Quick dry foam technology

No one likes wet cushions! That's why we use quick dry foam that allows water to drain out of the cushion quickly and is also resistant to mould growth.



Heavy duty aluminium frames

OceanWeave furniture uses marine grade 1.6-2.0mm powder coated aluminium framing. Designed for heavy commercial use - these frames will not rust or bend.



Sunbrella Fabrics

Cushions are covered with Sunbrella which are the global market leaders for outdoor fabric. They offer a 5 year warranty against fade, rot and material breakdown. They are colourfast, water resistant, stain resistant and washable.



3 year commercial warranty

You are covered by a comprehensive back-to-base 3 year warranty on furniture & cushions. The Warranty covers faulty workmanship and failure of materials under normal conditions of use and maintenance. Excludes normal wear and tear.



Expert craftsmanship

OceanWeave furniture is carefully hand-woven by experienced craftsmen. We have employed the best furniture weavers and quality control staff to ensure superior workmanship and consistent quality.

Made to last in commercial environments – tested over 50,000 sitting cycles

Furniture made with RAUCORD StressFlex is made to last, even in busy commercial environments. RAUCORD furniture stays intact after 50,000 cycles of load, which is equivalent to 7 years of commercial usage (based on 20 people sitting on the same chair per day). This is especially beneficial for outdoor furniture used in busy restaurants and resorts.

Proven in any climate – even under extreme conditions

RAUCORD StressFlex stays strong in both hot and cold climates. It can hold a load of 110 kg on a single seater chair for six hours at -10°C or up to four hours at 50°C without changes to the chair. Now you can use and leave your furniture outside all year round in any weather.

Strong and hard-wearing – up to 5x more durable

RAUCORD StressFlex offers up to 5x higher stress resistance than conventional synthetic weaving materials. Our state-of-the-art Stress Cracking Resistance Test shows that RAUCORD StressFlex provides superior durability: